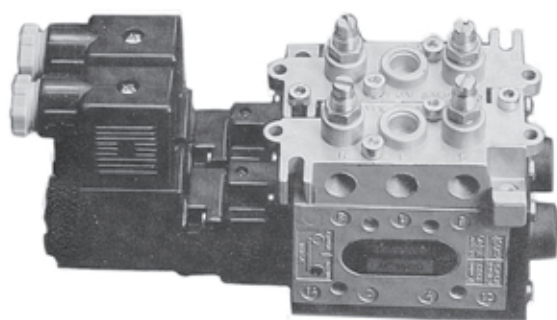




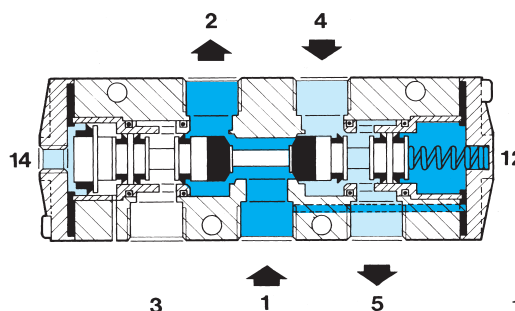
The "Mixed" system which has been produced for years is recommended for the majority of pneumatic applications which do not have particular circuitry requisites. The favourable quality/price ratio (response time, high cycles, high flow) make this valve particularly convenient. The special construction and the use of a special type of seal compound allow the use also with non lubricated air.

### TECHNICAL CHARACTERISTICS

Body in die-cast aluminium  
 Ambient temperature -10°C to + 45°C  
 Fluid temperature +50°C max  
 Fluid: filtered air 50 µm, with or without lubrication  
 Seals in nitrile rubber or Vulkollan  
 Indirect electropneumatic or pneumatic control  
 Pneumehanical spring return  
 Coil **U1** part number DA-... (upon request U3 coil part number DC-...)  
 Coil **U2** part number DB-...  
 (Section accessories page 13-V).

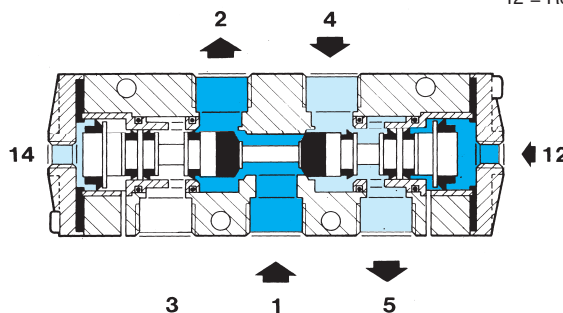


#### Single pneumatic control



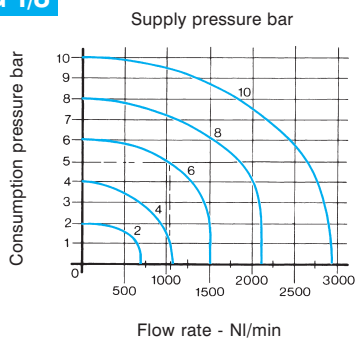
- 1 = Supply
- 2-4 = Consumptions
- 3-5 = Exhausts
- 14 = Control
- 12 = Return

#### Double pneumatic control

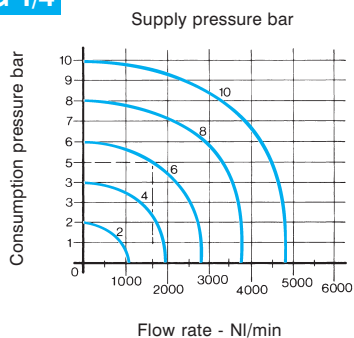


**NOTE:** an indicative estimate of the factor "CV" can be obtained by dividing the capacity values expressed in NI/min by "962"

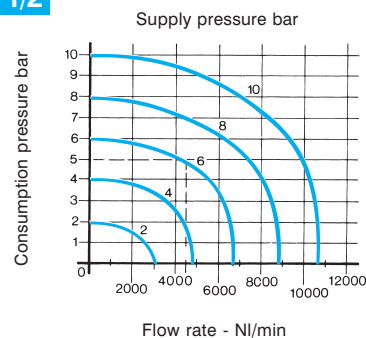
#### G 1/8



#### G 1/4

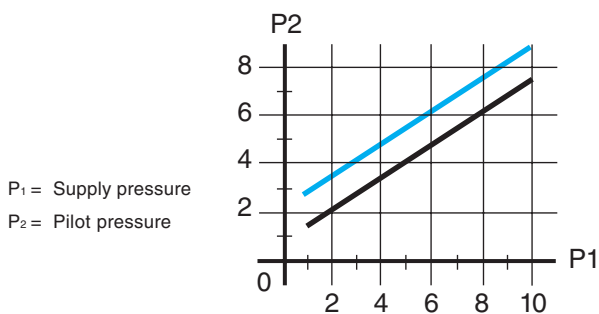


#### G 1/2

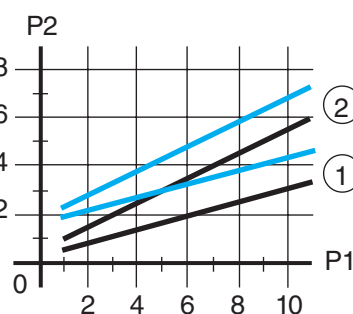


#### Pilot characteristics

##### Single pneumatic control



##### Double pneumatic control



- ① amplified control
- ② differential control
- P<sub>1</sub> = Supply pressure
- P<sub>2</sub> = Pilot pressure

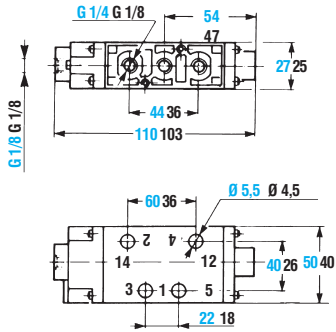
Type	Symbols	Connections	Control (14)	Return (12)	Coils	Ø mm	Capacity NI/min	Pressure bar	Times ms energ. (14)	de-energ. (12)	Mass kg	Part number
		G 1/8	Amplified pneumatic	Pneumatic-mechanic spring		6	1080	1,8 ÷ 10	8	10	0,22	AC-7100
		G 1/4				8	1600	1,7 ÷ 10	10	10	0,23	AC-8100
		G 1/2				15	4600	1 ÷ 10	10	10	0,76	AC-9100
		G 1/8	Amplified pneumatic	Amplified pneumatic		6	1080	1 ÷ 10	5	10	0,23	AC-7120
		G 1/4				8	1600	0,8 ÷ 10	6	6	0,21	AC-8120
		G 1/2				15	4600	0,8 ÷ 10	8	8	0,77	AC-9120
		G 1/8	Amplified electrical	Pneumatic-mechanic spring	U1	6	1080	1,8 ÷ 10	18	20	0,27	AC-7500 ⊖
		G 1/4				8	1600	1,7 ÷ 10	22	22	0,28	AC-8500 ⊖
		G 1/2			U2	15	4600	1 ÷ 10	23	30	1,1	AC-9500 ⊖
		G 1/8	Amplified electrical	Amplified electrical	U1	6	1080	1 ÷ 10	14	14	0,33	AC-7520 ⊖
		G 1/4				8	1600	0,8 ÷ 10	14	14	0,31	AC-8520 ⊖
		G 1/2			U2	15	4600	0,8 ÷ 10	16	16	1,1	AC-9520 ⊖

昊盛国际发展有限公司  
 电话：0592-6054592  
 传真：0592-6054591  
<http://www.housengj.com>

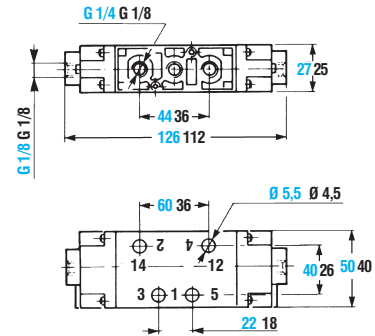
The part numbers of the electrovalves do not include coils.  
 Servoassistance of the G 1/8 and G 1/4 electrovalves is possible by putting a servoplate between the electropilot and the cap thus increasing the length per pilot by 8 mm in comparison with the standard version.



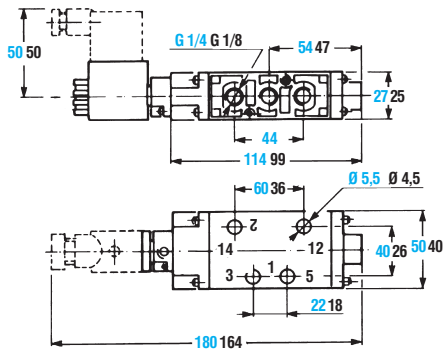
**Single pneumatic control 5/2 G1/8 - G1/4**



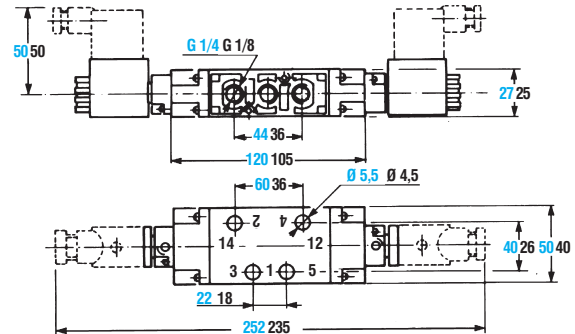
**Double pneumatic control 5/2 G1/8 - G1/4**



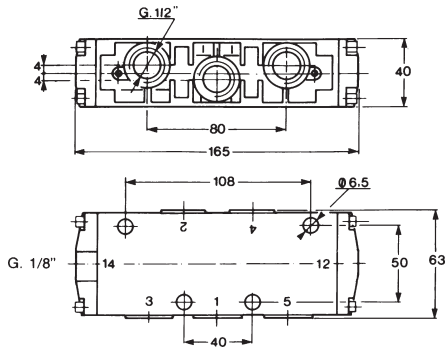
**Single electric control 5/2 G1/8 - G1/4  
L/aligned solenoid**



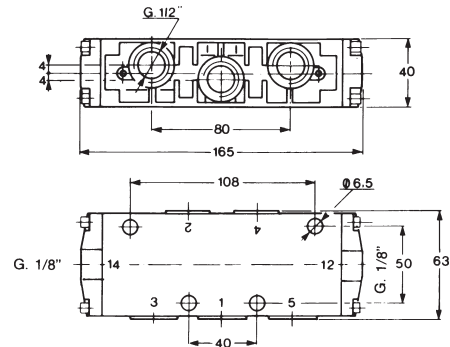
**Double pneumatic control 5/2 G1/8 - G1/4  
L/aligned solenoid**



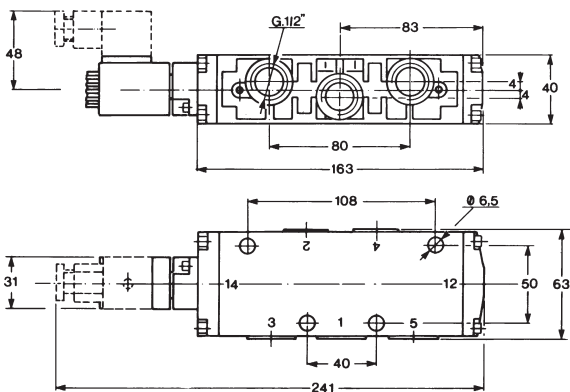
**Single pneumatic control 5/2 - G 1/2  
Mixed system**



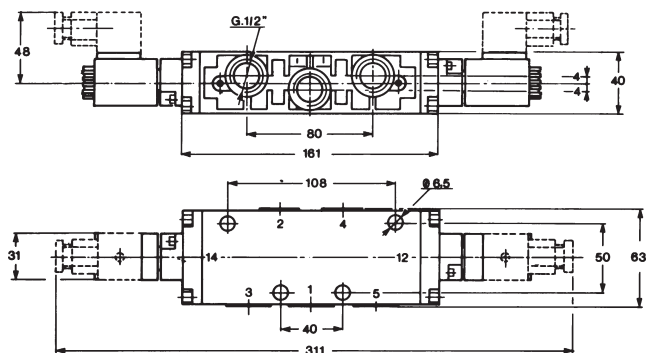
**Double pneumatic control 5/2 - G 1/2  
Mixed system**



**Single electric control 5/2 G1/8 - G1/4  
Mixed system - solenoid in line/L**


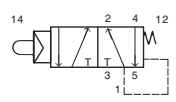


**Double pneumatic control 5/2 G1/8 - G1/4  
Mixed system - solenoid in line/L**


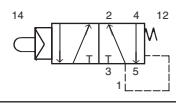

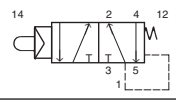

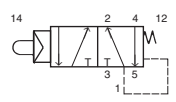


1 = Pressure, 2-4 = Consumption, 3-5 = Exhaust, 14 = Control, 12 = Return.



Type	Symbol	Connections	Control (14)	Return (12)	Ways	Ø mm	Capacity NI/min	Pressure bar	Mass kg	Part number
		G 1/8	Tappet rod		5/2	6	1080	2÷10	0,27	<b>AC-7010</b>
		G 1/4				8	1600	2÷10	0,28	<b>AC-8010</b>
		G 1/2				15	4600	2÷10	0,33	<b>AC-9010</b>

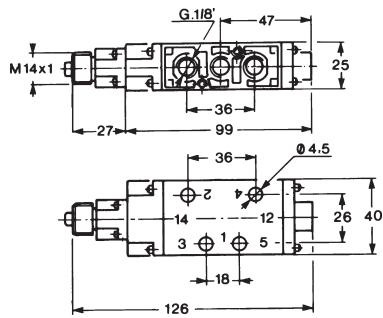
**Ø 22 valves for panel actuators mounting**

		G 1/8	Tappet rod		5/2	6	1080	2÷10	0,28	<b>AC-7013</b>
		G 1/8								
		G 1/4	Tappet rod		5/2	8	1600	2÷10	0,29	<b>AC-8013</b>
		G 1/4								
		G 1/2	Tappet rod		5/2	15	4600	2÷10	0,84	<b>AC-9013</b>
		G 1/2								

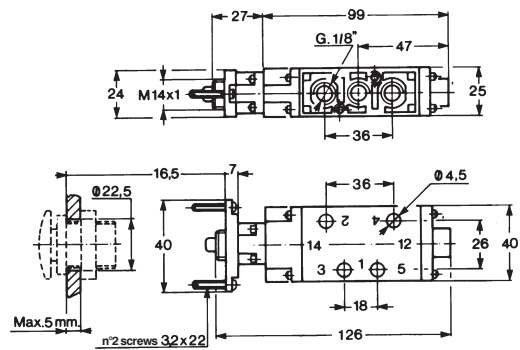
The operation of this valve is so effortless that the operator does not get tired even after numerous manual operations.

昊盛国际发展有限公司  
电话: 0592-6054592  
传真: 0592-6054591  
<http://www.housengj.com>

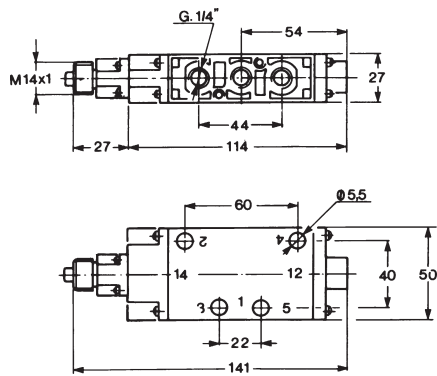
**Indirectly piloted basic valve with ball push 5/2 - G 1/8**



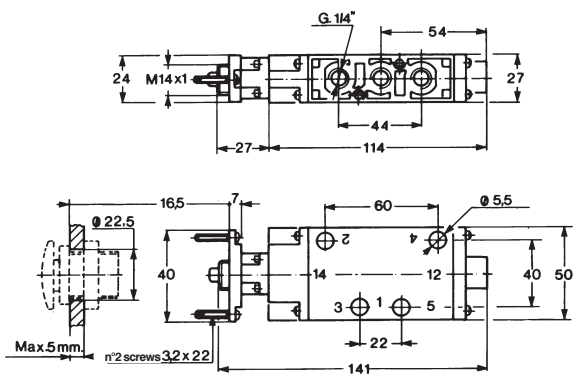
**Indirectly piloted basic valve 5/2 - G 1/8 for panel mounting**



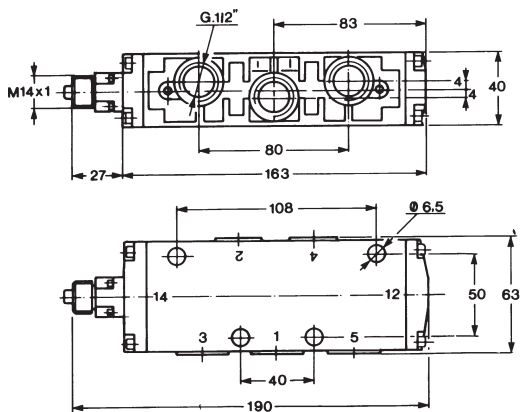
**Indirectly piloted basic valve with ball push 5/2 - G 1/4**



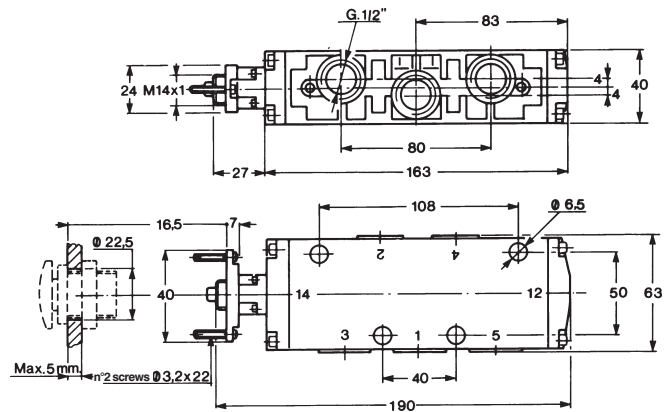
**Indirectly piloted basic valve 5/2 - G 1/4 for panel mounting**



**Indirectly piloted basic valve with ball push 5/2 - G 1/2**


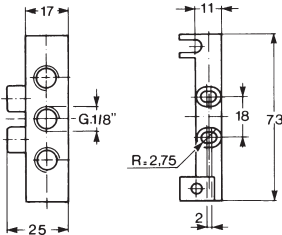
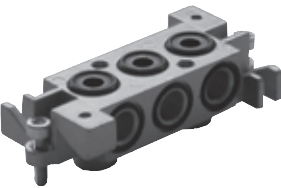
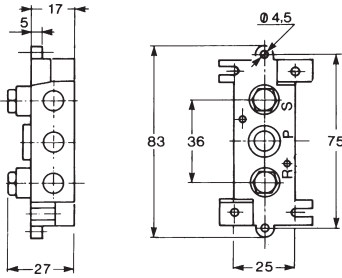

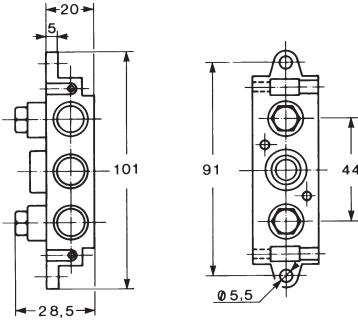
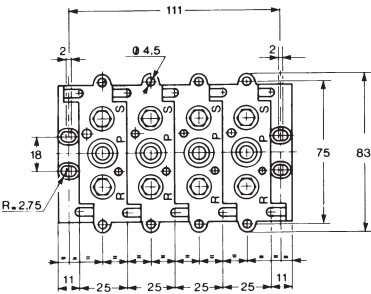
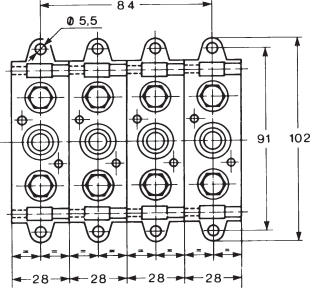


**Indirectly piloted basic valve 5/2 - G 1/2 for panel mounting**



1 = Pressure, 2-4 = Consumption, 3-5 = Exhaust, 14 = Control, 12 = Return.



Type	Overall dimensions	Remarks	Connections	Material	Mass kg	Part number
<b>Inlet plate MIXED system 5/2 - G 1/8</b>						
 <p>Standard screws and seals</p>		side connections	G 1/8	zamak	0,09	<b>AC-7905</b>
<b>Sub-base with threaded G 1/8 connections</b>						
 <p>Standard screws and seals</p>		-	G 1/8	zamak	0,15	<b>AC-7900</b>
<b>Sub-base with threaded G 1/4 connections</b>						
 <p>Standard screws and seals</p>		-	G 1/4	zamak	0,22	<b>AC-8900</b>
<b>Overall dimensions</b>						
<p><b>G 1/8</b></p> 		<p><b>Advantages</b></p> <p>The sub-base used for MIXED valves has been designed and patented keeping in mind existing problems.</p> <ul style="list-style-type: none"> <li>- Possibility to establish the number of sub-bases required at the time of use.</li> <li>- Possibility to increase or reduce the number of elements without any restriction.</li> <li>- Quick assembly with a special standard supplied screw.</li> <li>- Reduction of stocks.</li> <li>- Easy technical intervention.</li> <li>- Possibility to select the functions of each manifold assembly (pressure differentiation, exhaust adjustment) by increasing or decreasing the number of the elements without restriction.</li> </ul>		<p><b>G 1/4</b></p> 		

**昊盛国际发展有限公司**  
**电话: 0592-6054592**  
**传真: 0592-6054591**  
<http://www.housengj.com>